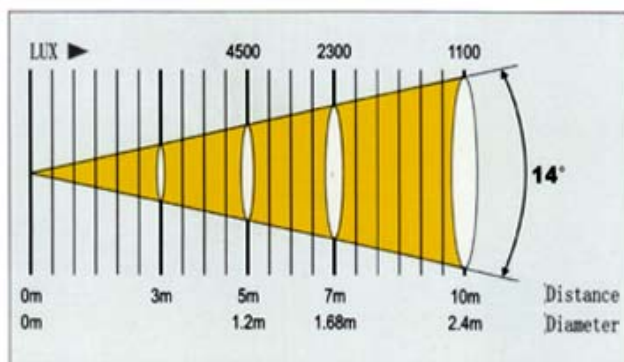
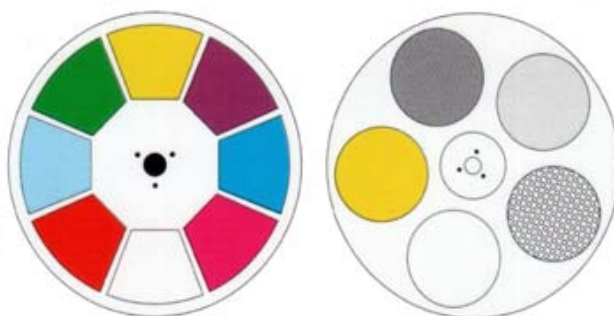


575W Moving Head Light.

No. A1009

TECHNICAL PARAMETER

Power: AC110V-240V 50-60Hz
 Lamp: HNI575W
 Power: 680W
 Control: DMX 512
 Channels: 16CH
 Size: 500 × 470 × 565mm
 N.W: 32kg
 G.W: 35kg



PERFORMANCE TRAIT

8 colors, achieving high speed smgle way rainbow and scrolling effect pattern internal light rotating function, freely adjusting Fast,low speed,clockwise and anticlockwise BL25088kinds of changable patterns (including one glass pattern and 6 metal parrrens and 1 white light)
 Mechanical light adjustment and 1-10 times/s strobo effect
 Horizontal direction 450° scanning, smooth scanning action and accurate orientation Vertion270° scanning, smooth scanning action and accurate orientation 3Prism effect,prism rotating
 Automatic focusing function
 DMX512international digit display
 Compatible with DMX512internatrnal digital signal
 4convection cooling fan, optimixe internal air duct way, heat elimination rapidly
 Accord to variety standard, IP20,power line accord to CE 20/22

Channel Function :

1	颜色盘 (8) Color Wheel	0-30 31-42 43-54 55-66 67-78 79-90 91-102 103-113 114-255
2	图案 (8) GOBO	0-31 32-43 44-54 55-66 67-78 79-90 91-102 103-113 114-255
3	图案自转 GOBO Rotate	0 → 127 128 → 190 191 → 192 193 → 255 0° 140° Stop
4	开灯频闪 Strobe	0 → 139 140 → 243 244 → 255
5	X轴 Pan	0° Pan 450°
6	Y轴 Tilt	0° Tilt 270°
7	棱镜/ 棱镜自转 Prism	0 → 255
8	调焦 Focus	0 → 255
9	X/Y速度 X/Y Speed	0 → 249 250 → 255
10	复位 Reset	251 → 255